

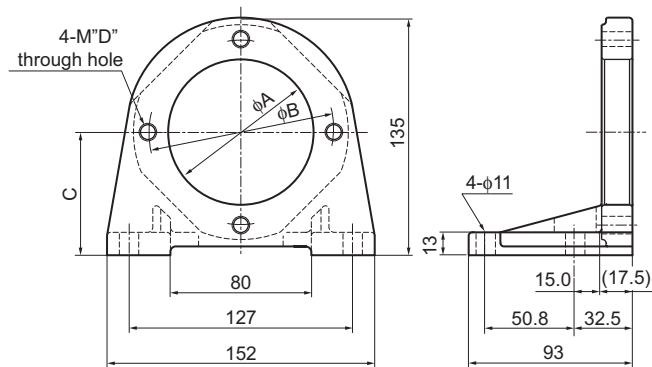
# Foot Supports

## Pump/foot support comparison table

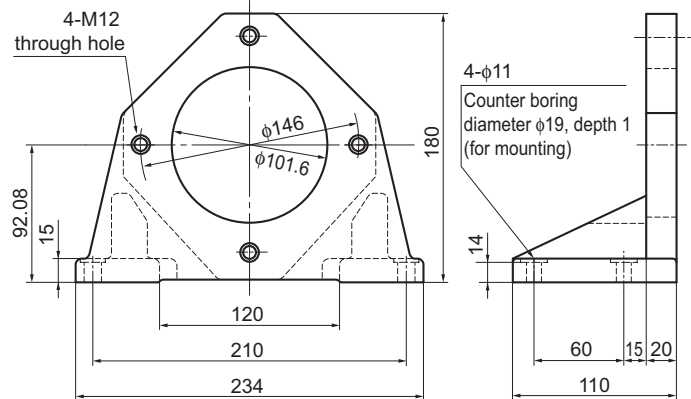
Pump model	Foot support model
V8	V8M-10
V15	V15M
V23, V38	V38M-50
V50, V70, VZ63, VZ80	VR80M-20
VZ50	VR50M-20
VZ100	23F
VZ130	24F
DS10P	DS-10M
DE10, DE20	V15M or FTB-422582
DEV20, DEV25	V38M-50 or FTB-422583
DEV35	VR80M-20 or FTB-422584
DEV45	FTB-422584

## External dimension diagram

V8M-10, V15M

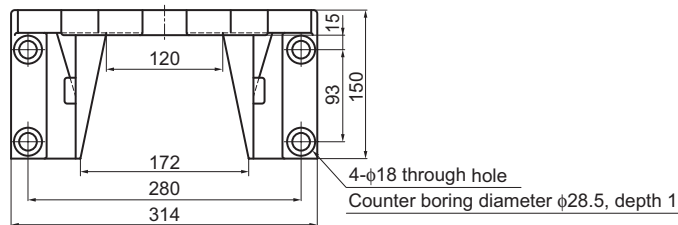


V38M-50 Mass: 4.9 kg

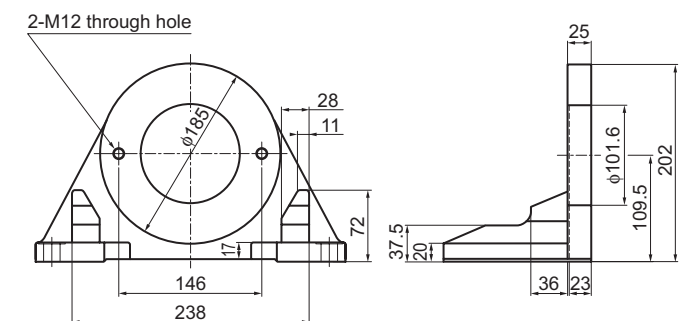
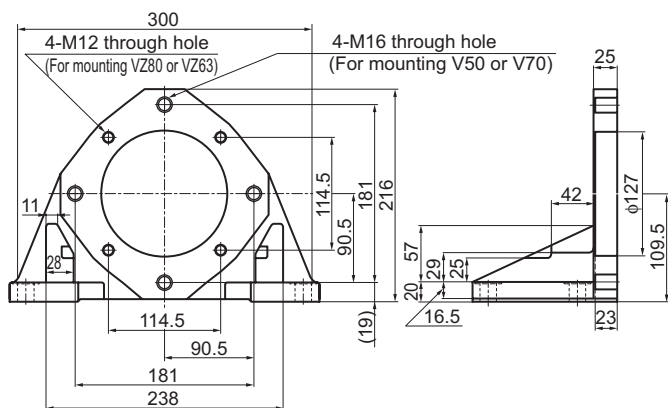
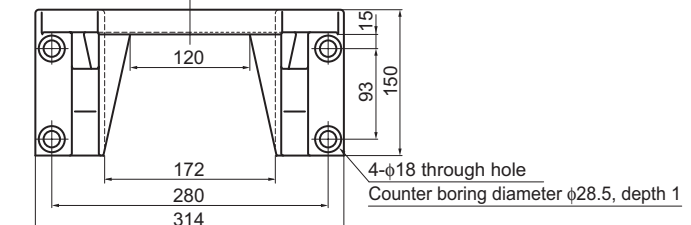


Model	A	B	C	D	Mass
V8M-10	63	100	71	8	2.3 kg
V15M	82.55	105.6	69.9	10	2.1 kg

VR80M-20 Mass: 8.3 kg

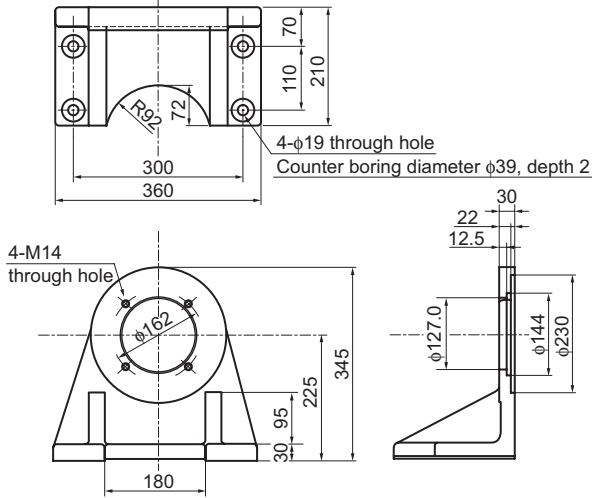


VR50M-20 Mass: 8.5 kg

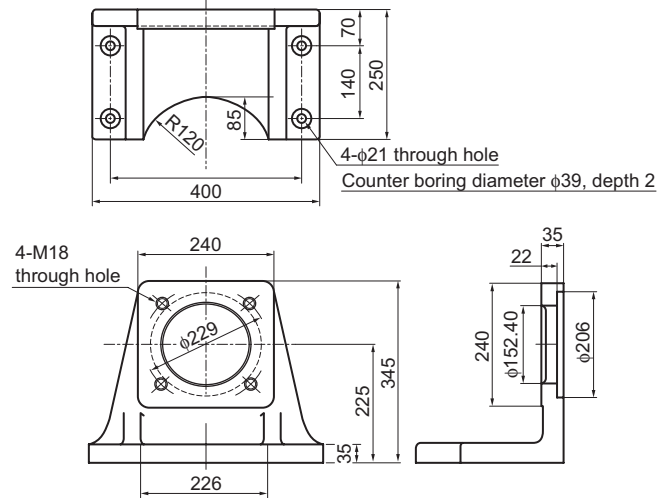


**External dimension diagram**

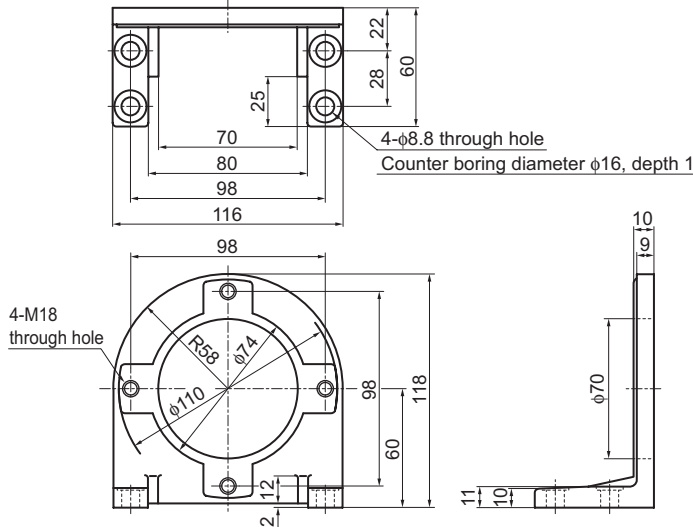
23F Mass: 30 kg



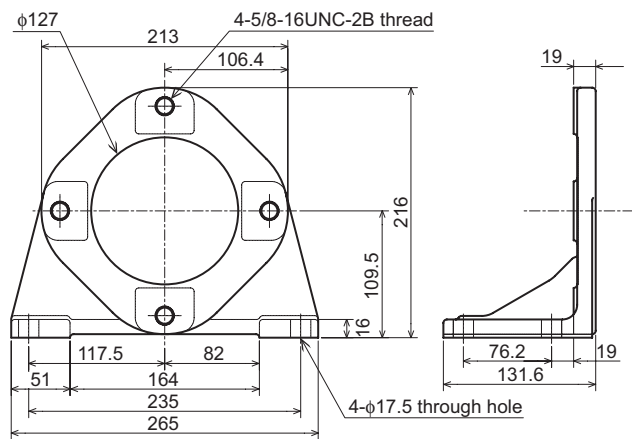
24F Mass: 40 kg



DS-10M Mass: 1.6 kg



FTB-422584 Mass: 5.9 kg



**Pump Coupling Hole Machining Dimensions**

The following table shows the recommended dimensions for machining coupling holes for each pump model.

Hole dimension		Recommended dimensions for machining a coupling hole (mm)					
Pump model		φA		B		C	
Piston pumps	V8 series	16	+0.018 +0	5	+0.03 +0	18	+0.2 +0
	V15 series	19.05	+0.021 +0	4.78	+0.03 +0	21.15	+0.2 +0
	V23, V38 series	22.2	+0.053 +0.02	6.32	+0.036 +0	25.08	+0.3 +0
	V50, V70 series	31.75	+0.025 +0	7.94	+0.036 +0	35.35	+0.3 +0
	VZ50 series	25.4	+0.021 +0	6.35	+0.036 +0	28.19	+0.3 +0
	VZ63, VZ80 series	31.75	+0.021 +0	7.94	+0.036 +0	35.35	+0.3 +0
	VZ100, VZ130 series	44.5	+0.025 +0	11.11	+0.068 +0.025	49.3	+0.3 +0
Vane pump	DS10P series	16	+0.018 +0	5	+0.03 +0	18.2	+0.2 +0
	DE10, DE20 series	19.05	+0.028 +0.007	4.81	+0.028 -0.002	21.33	+0.2 +0
	DEV20, DEV25 series	22.2	+0.053 +0.032	4.81	+0.028 -0.002	24.74	+0.2 +0
	DEV35, DEV45 series	31.75	+0.034 +0.01	8	+0.024 -0.012	35.56	+0.2 +0

